



Portland Court, Hoddesdon, EN11 8FB

Offered chain-free, this modern two double bedroom first-floor apartment, is ideally situated in a prime location just steps away from the Hoddesdon High Street and in close proximity to the Barclay Park. This property boasts modern features, including gas central heating, double glazing, and a spacious 18' lounge, well-appointed fitted kitchen with integrated appliances, ensuite to master bedroom, a generously sized 14' second bedroom, modern bathroom suite and allocated parking space.

Key features

- Offered chain free
- Conveniently located near the High Street and Barclay Park
- Impressive 18' lounge
- Ensuite to bedroom one
- Two double bedrooms
- Gas central heating and double glazed windows
- Fitted kitchen with integrated appliances
- Allocated parking

Property Information

Tenure
Leasehold
Council Tax
D
EPC Rating
C
Local Authority
Bromley Borough Council



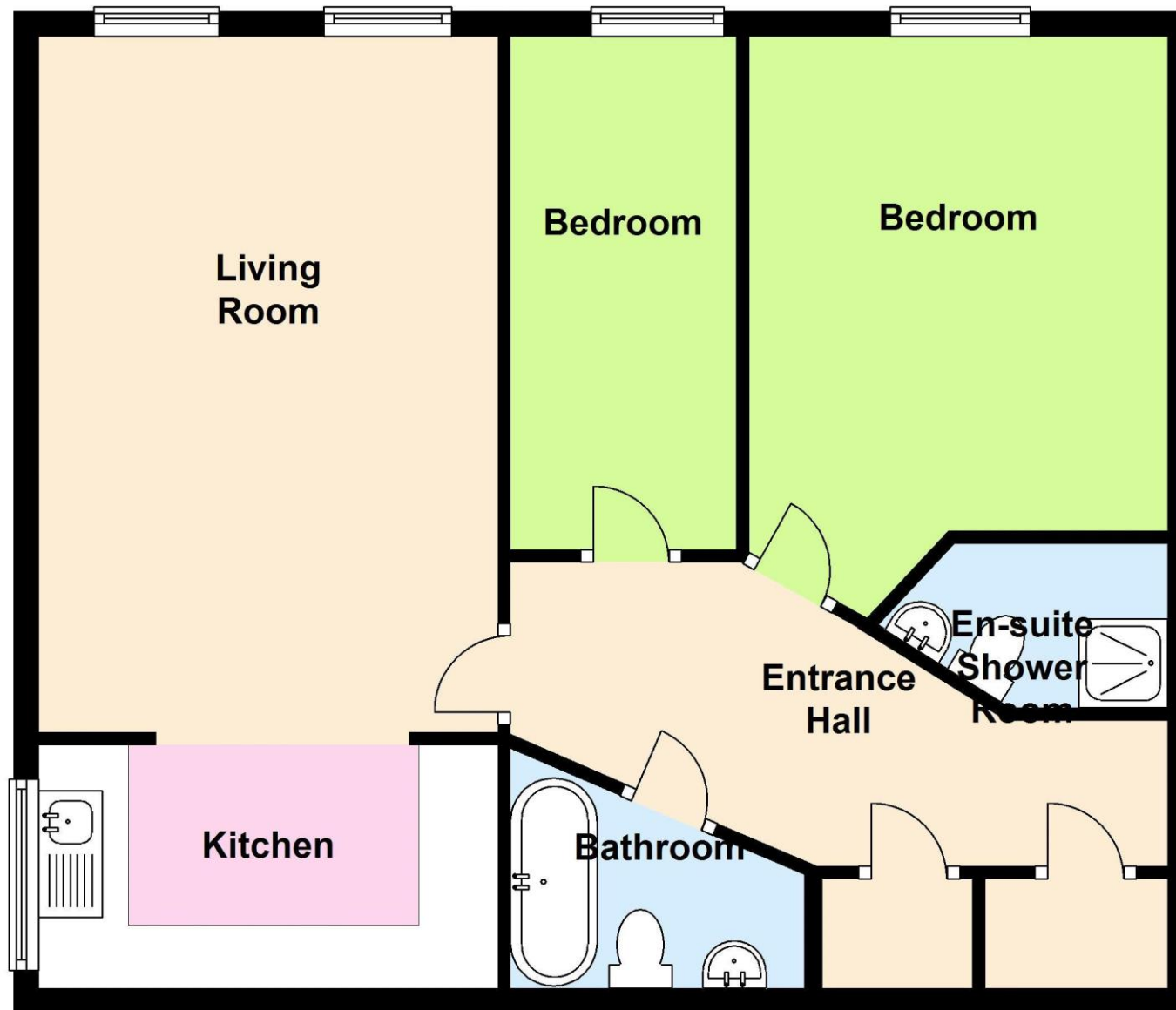
hoddesdon@paulwallace.co.uk
01992 466471







First Floor



5 Portland Ct, Hoddesdon

Registered Address: Unit 3 The Brookfield Centre, Cheshunt, Herts, EN8 0NN Company Registration Number: OC414280 | VAT Number: 276958046©2022 Paul Wallace Group LLP trading as Paul Wallace Estate Agents



Paul Wallace Estate Agents

70 High Street
Hoddesdon
Hertfordshire
EN11 8ET



01992 466471



hoddesdon@paulwallace.co.uk



www.paulwallace.co.uk



Opening Times

| | |
|-------|---------------|
| Mon | 9am to 6.30pm |
| Tues | 9am to 6.30pm |
| Wed | 9am to 6.30pm |
| Thurs | 9am to 6.30pm |
| Fri | 9am to 6.30pm |
| Sat | 9am to 5.00pm |
| Sun | Closed |



paulwallace
estate agents

Agents Note: Whilst every care has been taken to prepare these sales particulars, they are for guidance purposes only. All measurements are approximate and are for general guidance purposes only and whilst every care has been taken to ensure their accuracy, they should not be relied upon. Potential buyers are advised to recheck the measurements.